



RAISED 1X PERIMETER

FOR EASY INTERIOR FLOOR INSTALLATION

IF YOU WISH to safely install a finished floor in your yurt, follow these simple steps to build a raised 1x perimeter during platform construction. The yurt frame will sit on this raised 1x perimeter, allowing the yurt to be set up before interior flooring is installed. This eliminates the potential for damage to your floor during installation of the yurt or from weather exposure to the flooring before the yurt is erected.



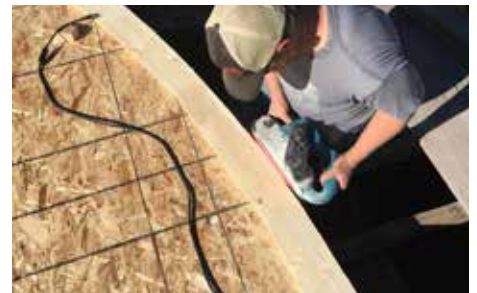
STEP 1

Build your framed or SIPS platform according to our specifications. After you have cut the subfloor round or installed the SIPS go to step 2. Do not attach the Bender Board yet.



STEP 2

Using glue and screws or nails, fasten short mitered sections of 1x6 around the very outer perimeter on top of the subfloor surface. The 1x6 should just overhang the radius cut of the subfloor.



STEP 3

Cut and sand the outer edge of the 1x6 to match the outer edge of the radius cut of the subfloor.



STEP 4

Apply stain or finish to the raised 1x6 perimeter. Choose a color that compliments your flooring choice.



STEP 5

Install the painted or stained Bender Board around the outer edge of the platform. The Bender Board should completely cover your framing and stick up 6" above the installed raised perimeter. The lattice and fabric will anchor to the Bender Board during the installation of the yurt.



STEP 6

After the yurt is erected, install your flooring. Follow the flooring manufacturer's instructions for an expansion gap between the edge of the flooring and the raised perimeter. This expansion gap can be covered with a piece of molding to give a complete and finished look.

GENERAL CUT GUIDELINES

Please note these numbers are approximate and long point measurements are on the actual radius cut, not the straight edge of the 1x6. We recommend cutting a number of test pieces and dry fitting them onto the circular subfloor. Adjust the length and angle as needed.

12' YURT	19 pieces cut at approx 23 13/16" to the long point of a 9.5 degree angle
16' YURT	26 pieces cut at approx. 23 1/4" to the long pint of a 6.9 degree angle
20- YURT	32 pieces cut at approx. 23 9/16" to the long point of a 5.6 degree angle
24' YURT	38 pieces cut at approx. 23 13/16" to the long point of a 4.7 degree angle
27' YURT	43 pieces cut at approx. 23 3/4" to the long point of a 4.2 degree angle
30' YURT	48 pieces cut at approx. 23 9/16" to the long point of a 3.75 degree angle
35' YURT	56 pieces cut at approx. 23 9/16" to the long point of a 3.2 degree angle
40' YURT	64 pieces cut at approx. 23 9/16" to the long point of a 2.8 degree angle

